



**DELISLE**

4, RUE DU PARC-ROYAL - 75003 PARIS









# SUMMARY

HISTORY	P. 7-9
SAVOIR-FAIRE	P. 11-13
COLLECTIONS	P. 15-31
BESPOKE	P. 33-65
PROJECTS	P. 67-85
CONTACT US	P. 86







la cage est à augmenter  
de 5 à 6 c en hauteur  
le vase un peu trop gros  
et trop haut -

# HISTORY



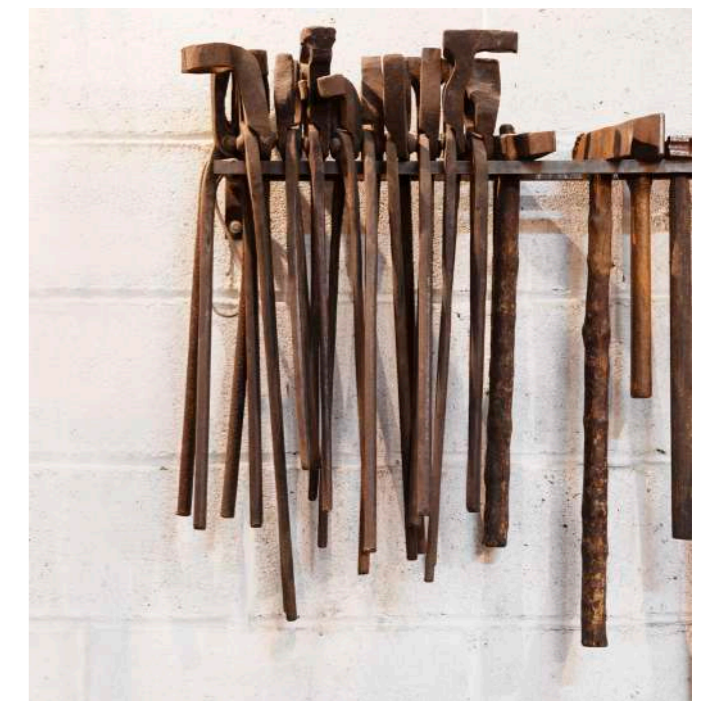


Delisle is above all the story of family united by a vision and values of excellence, humility and sharing. Know-how and attention to detail are transmitted from one generation to the next to create a climate of trust for decorators and their clients. Since 1895, this bronze-smith has been based in the Marais, an ideal area to write its history of bronze, iron and gold. Henry Delisle, a man of his time, set up with his brother Gaston the Maison Delisle Frères in the Hôtel de Lamoignon, now the Bibliothèque Historique de Paris. It was the Belle Époque when luxury sacrificed nothing to Progress. Everything was illuminated and electricity magnifies the bronzes and crystals. The Grand Duke Paul of Russia and other great aristocrats and European courts of that prosperous era were the prestigious clients of the Delisle brothers. Art Deco was adopted with demanding enthusiasm by La Maison Delisle which earned it an award at the Universal Exhibition in Rio in 1922.

In 1935, Delisle moved permanently to the Hôtel de Canillac, one of the famous aristocratic houses that give the Marais its unique charm. Restoration projects marked the second part of the 20<sup>th</sup> century under the direction of Pierre-Jacques Delisle. Versailles, its opera house, the Hall of Mirrors and other public construction sites were all opportunities for the bronze-smiths to mobilize their archives and ancestral know-how.

The great creators of the time such as Royère and Poillerat also collaborated with Delisle and these partnerships would flourish at the end of the 20<sup>th</sup> century, led by Jean-Michel Delisle when he joined the family business in 1978.

Jean, the fifth generation of Delisle to run the family business, is perpetuating the tradition of the maison's classic tailor-made products by bringing it into the 21<sup>st</sup> century.





# SAVOIR FAIRE





# SAVOIR-FAIRE

## DRAWING

The pencil line is the basis of the training of our design office team, which puts its knowledge at the service of professional and private customers.

## SCULPTURE

The work of a bronzier consists in reproducing in molten metal a model thus generated from the drawing. Whether it is carved in wood or modeled in plaster, it is then that the dream becomes reality.

## FOUNDRY

The model, a heritage item preserved in our workshops, is then entrusted to art founders. Two techniques exist: sand casting in the great French tradition and lost wax casting.

## TURNING & MINING

In order to perfect the straightness of the parts which must be assembled without defects, to straighten the parallel surfaces, to thread the drillings etc., the round parts known as «of revolution» are machined on a lathe.

## CHISELLING

Chiselling or «surface animation» is one of the noble crafts that contributed to the reputation of French furniture makers during the Great Centuries.

## MOUNTING

The chiselled and turned parts are entrusted to the bronze assembler, a true interpreter who will bring to life the object dreamed by our clients. The parts are then carefully prepared to be assembled either by screwing or brazing so that they perfectly match the 1:1 scale plan.

## FORGE

The forge is the privileged tool of the ironworker who, unlike the bronze worker, does not assemble cast and prepared parts in advance. Guided by the drawing that has been given to him, he will start with a steel bar that he will heat to red and then to white to bend and refine it.

## FINISHING

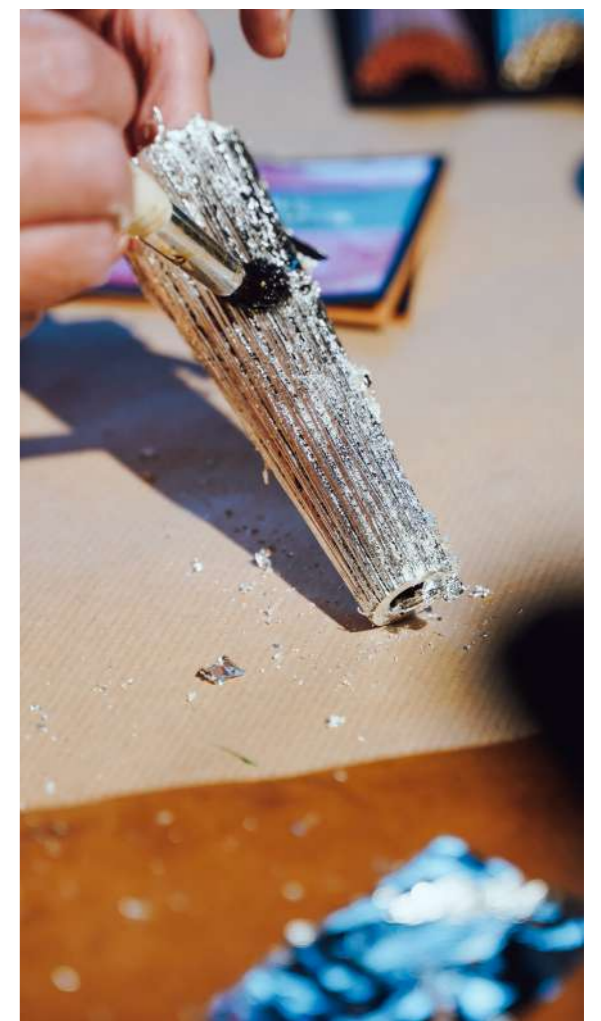
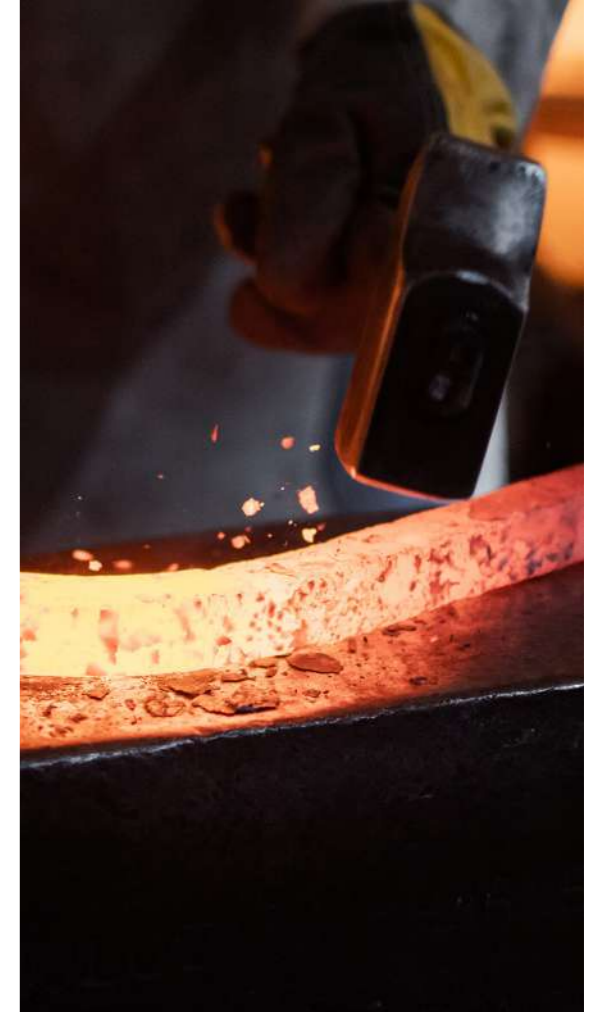
Depending on whether it is made of bronze or iron, the decoration will be different in its technique but with the primary goal of making the work given even more beautiful while protecting the metal which oxidizes in the ambient air.

## REMountING

After checking the decor, the pieces are assembled by the fitter in accordance with the technical drawing and the customer's specifications.

## CRISTALLERIE

The last step is often the contribution of jewelry and ornaments that will make the light sparkle.







# COLLECTIONS

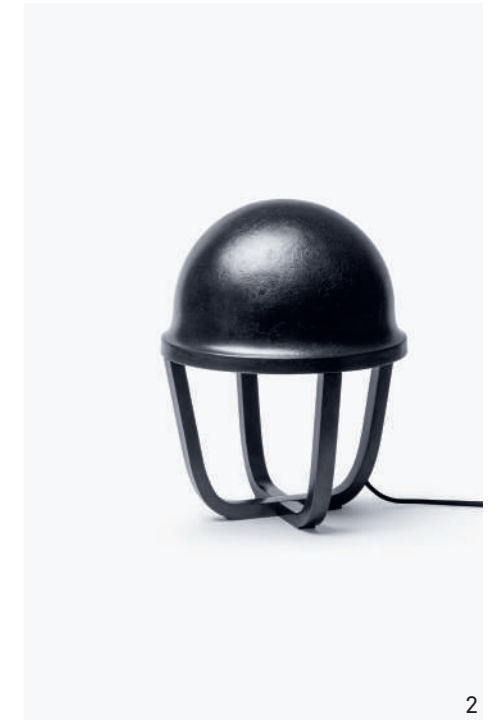


# SCHMITT

BEFFROI



The collaboration between Eric Schmitt and Jean Delisle seemed like an evidence, built on mutual trust and a shared vision. Aware of Delisle's talents and classical savoir-faire, the designer took the iron and bronze craftsman into his contemporary world where the pure and silent lines are complemented by the refined textures of the worked materials. Fire patina, white gold leaf and brass leaf are the finishes chosen to enhance the models. Polished slate, alabaster and Thassos marble are also used.



1 - Coffee table - 13929  
2 - Table lamp - 13918  
3 - Pendant - 13920B



# WILMOTTE

## VERSAILLES



The rehabilitation of the Richaud Hospital, built in the 18th century in Versailles and classified as a historical monument, was the starting point for the collaboration between Jean-Michel Wilmotte, world renowned architect and designer, and the Maison Delisle. The Versailles collection begins with a contemporary reinterpretation of the classic lantern, from which it takes all the codes. This collection is characterized by its elegance, its pure and frank lines, the use of materials such as anthracite steel and curved extra white sandblasted glass offering a more subdued lighting. A second collaboration between Delisle and Jean-Michel Wilmotte was born in 2023, the In Folio collection.



1- Lantern - 13626 - Versailles collection  
2 - Wall-sconce - 13821 - Versailles collection  
3 - Lantern -13937 - In Folio collection



# AUBAGNAC

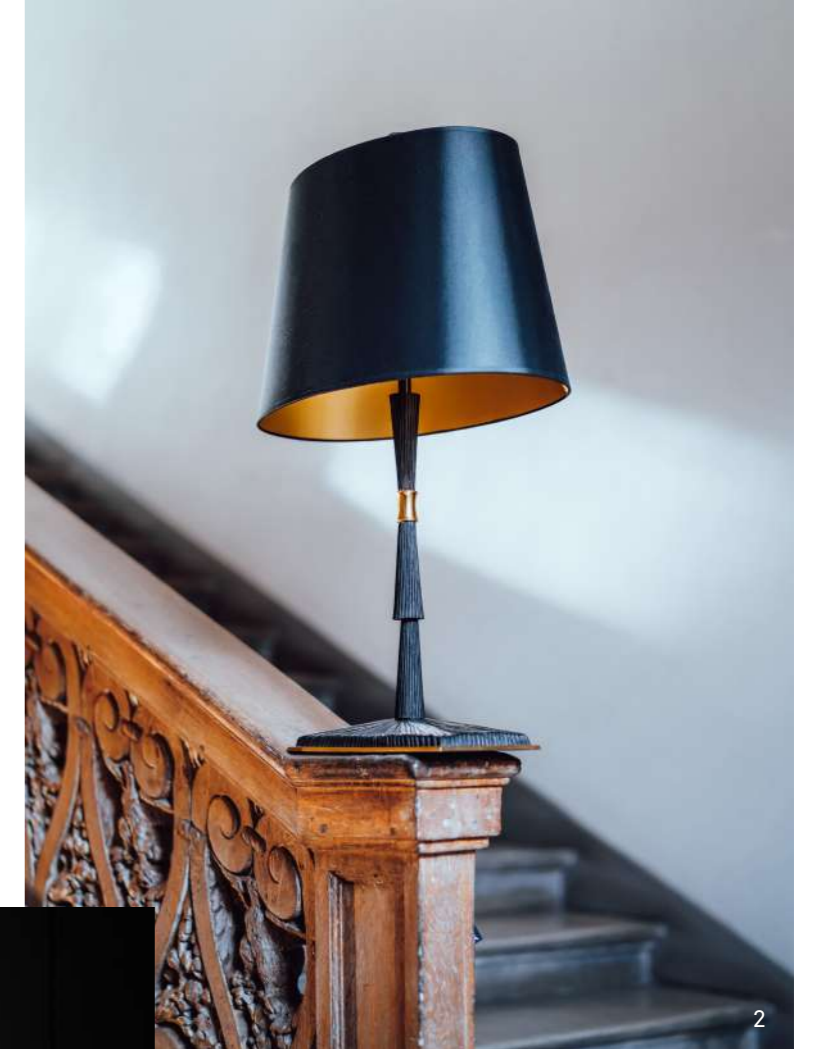
## PAPYRUS, AMAZONE



Nicolas Aubagnac began his relationship with Delisle in 2004 with the Papyrus collection. The cone, inspired by plants, in finely chiseled bronze with a slight patina, became the emblem of this collection, which represents modernity and minimalism of form. The Amazon collection was born in 2018, an ode to the material for which the designer was inspired by the vines and roots of the great tropical forests by reinterpreting the astonishing textures. Each model is a plant structure like a mangrove, combining the complexity of lines and the power of bronze.



1



2



3



4

- 1- Wall-Sconce - 13795 - Amazone collection
- 2- Lamp - 13854B - Papyrus collection
- 3- Wall-sconce - 13947 - Papyrus collection
- 4- Pendant - 13517 N/O - Papyrus collection

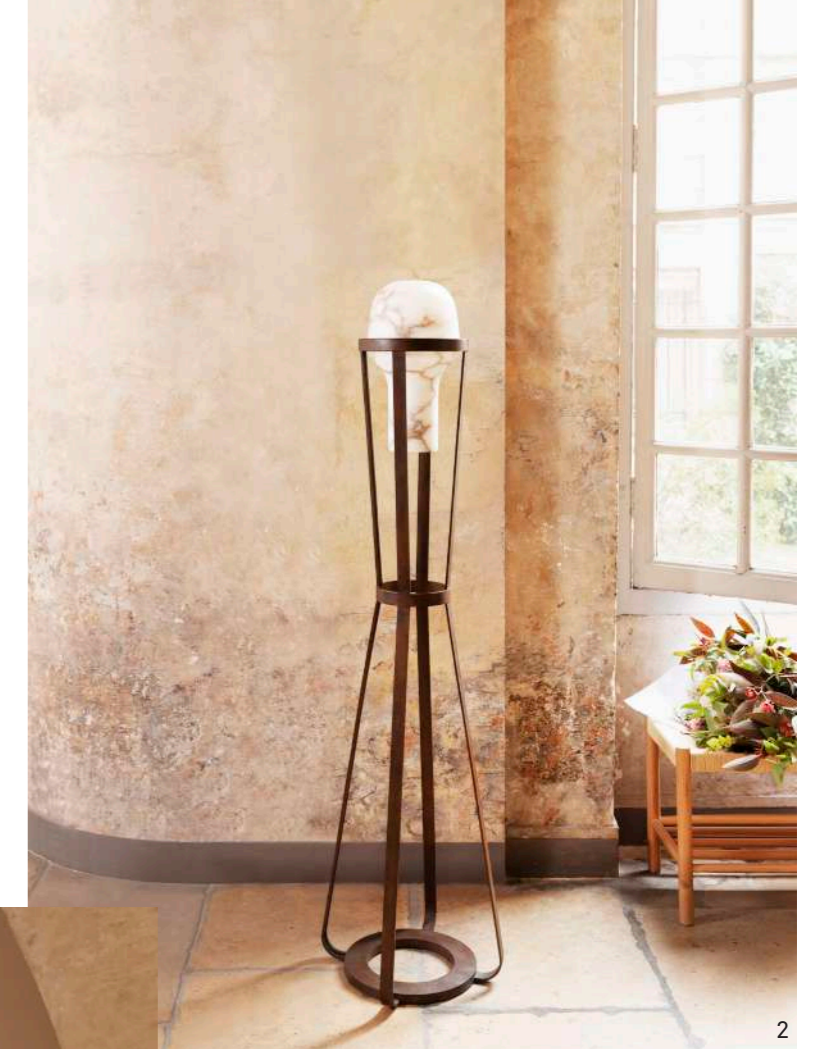


# BARNES

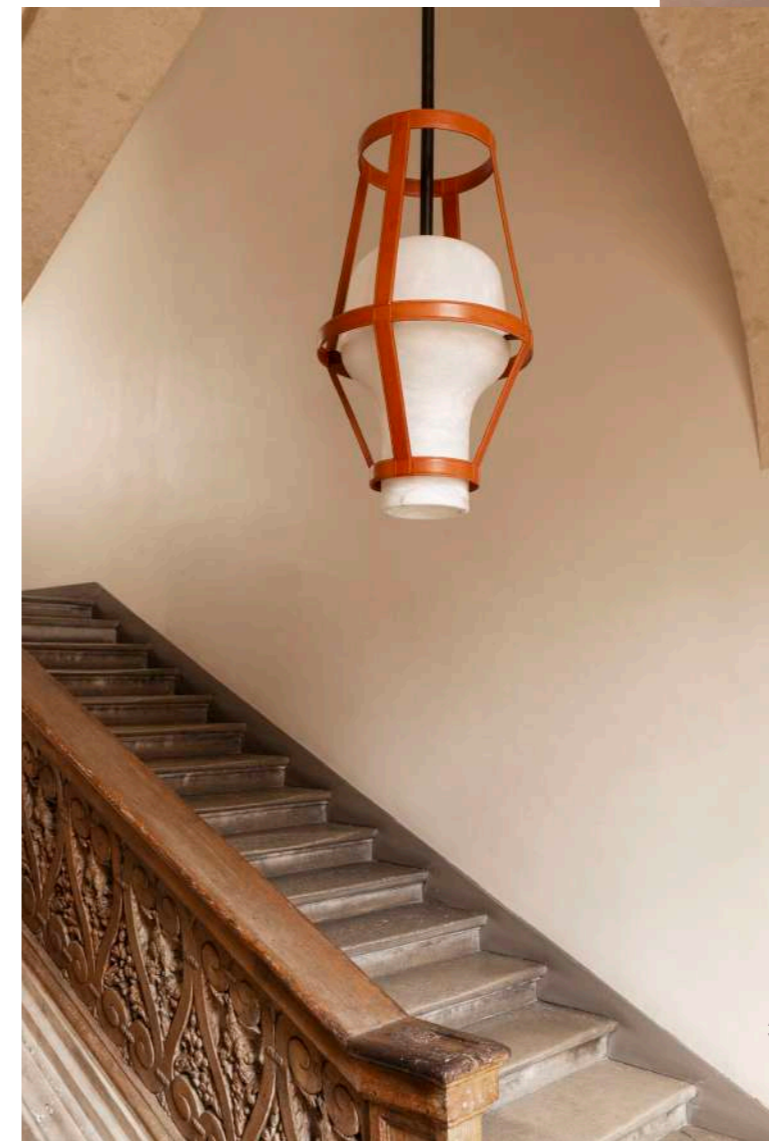
## POINCIANA



1



2



3



4

The story of the Poinciana collection began as a certain setting during an exchange between two enthusiasts: Elliott Barnes and Jean Delisle. By extracting the form of the wooden handles that sink into the craftsmen's palms, from the punches and rasps used to form metal, stone or leather, Elliott Barnes saw the major notes needed to create objects that would illuminate and configure spaces. Held in levitation by a burned bronze frame, hammered or patinated, Poinciana also offers a series of designs sheathed in leather. The collection of this luminous element in alabaster includes chandeliers, pendant lights, sconces, floor lamps, table lamps and even side tables. This contemporary arrangement of exquisite materials is the basis of the Poinciana collection presented in 2019.

- 1- Side table - 13875 / CU3
- 2- Floor lamp - 13860 / BR1
- 3- Large pendant - 13837 / CU2
- 4- Table lamp - 13858 / CU1

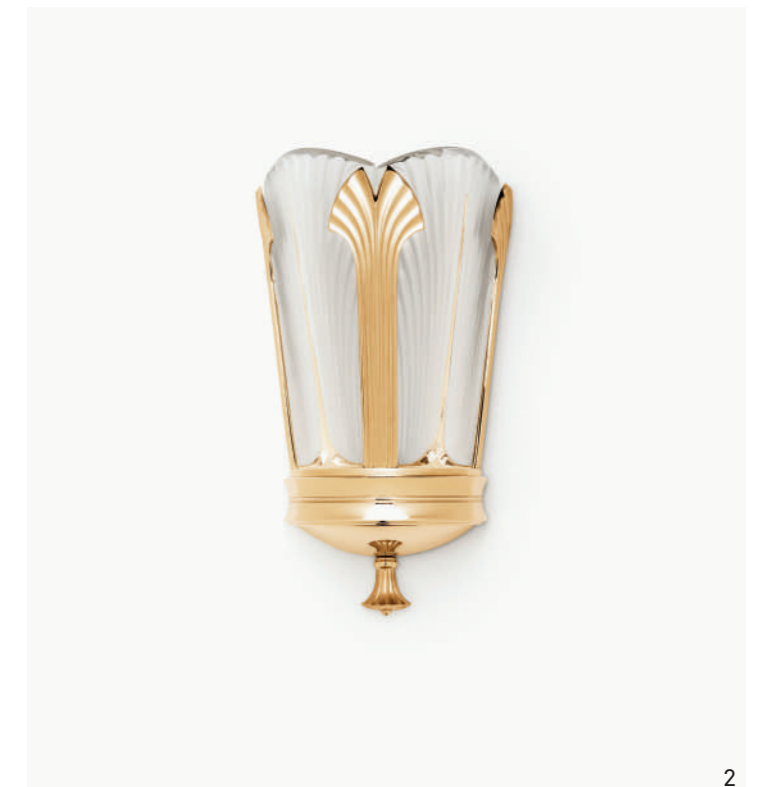


# DELISLE & LALIQUE

## GINKGO



The Ginkgo collection revives a great accord between the two houses, who have already met in the past. This new project is inspired by a chandelier from the 1930s, which was designed for the Intercontinental hotel and pulled out of the archives of Delisle. The collection is inspired by the timeless beauty of ginkgo biloba, an Eastern sacred tree, symbol of longevity, hope and prosperity. It consists of chandeliers, ceiling lights, wall sconces and a lamp, all featuring pure clean geometric shapes in an Art Deco spirit. The sparkle of satin-finished crystal meets the precision of the engraved bronze lines. Throughout history, artists have always been fascinated by the aesthetics of the ginkgo; often called the “tree of a thousand crowns” in reference to the golden rain of its leaves in autumn. As adornments, these luminaires decorate the finest interiors and integrate naturally in the most creative spaces in modern design. Combining the crystal purity and harmony of shapes, Ginkgo shows exception in design, perfect proportions and the pursuit of excellence in every detail.



1- Chandelier - 13770  
2- Wall sconce - 13771/OR



# DELISLE

## HOMMAGE À MACKINTOSH



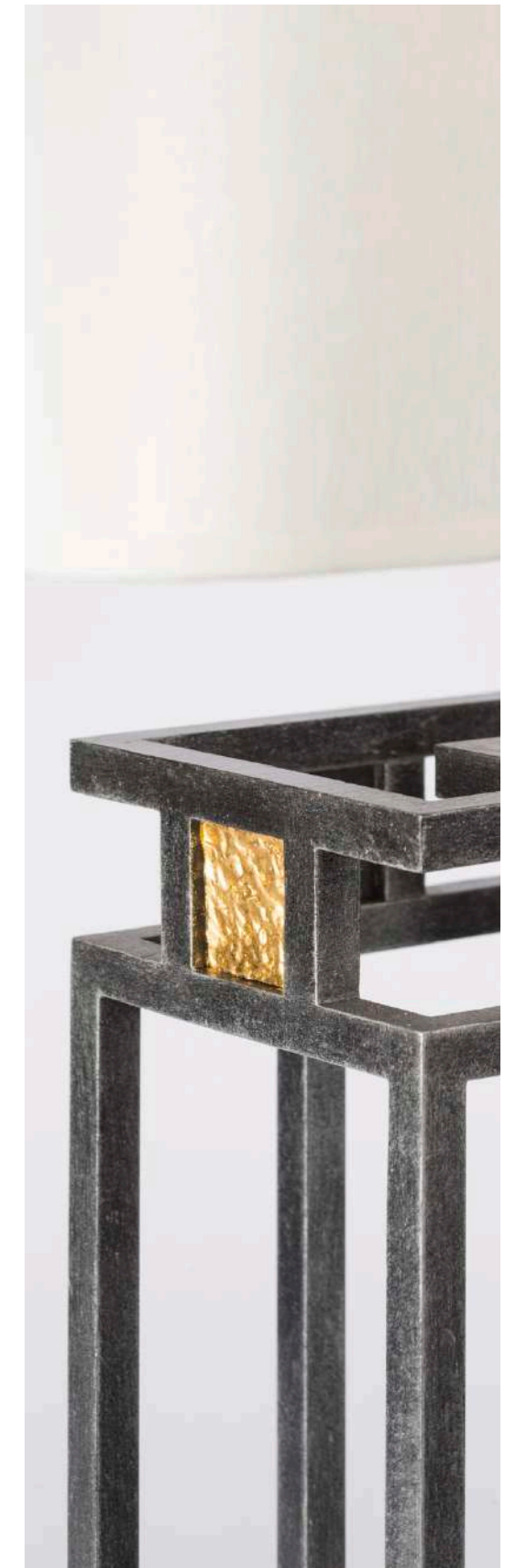
Jean-Michel Delisle has always been seduced by architectural and symmetric styles; the Willow Chair and the famous 292 Hill House chair designed by Charles Rennie Mackintosh caught his eyes during a visit to Glasgow. This collection wants to pay tribute to him by offering simple lines with the twinkle of the small gold bronze cameos which light faces. Light is always diffused, soft, on tense lines like upright rods that carry the small bronze suns. The lantern, the first model of the collection, was designed to light a gallery entirely decorated by Ruhlmann some years after the First World War.



1



2



1- Coffee Table - 13629  
2- Floor lamp - 13862



# LIAIGRE

## BELLECHASSE



For the creation of the Weston store on the Champs Elysées, Christian Liaigre imagined a modern and refined space. He called upon Delisle to create an elegant and timeless lantern illuminating the central staircase of the project. This architectural lantern has become an iconic model and has been produced by Delisle ever since. It was then adapted into a half-lantern for the restoration of the exceptional Taillevent restaurant in Paris.



1- Half lantern - 13948B  
2- Lantern - 13390B

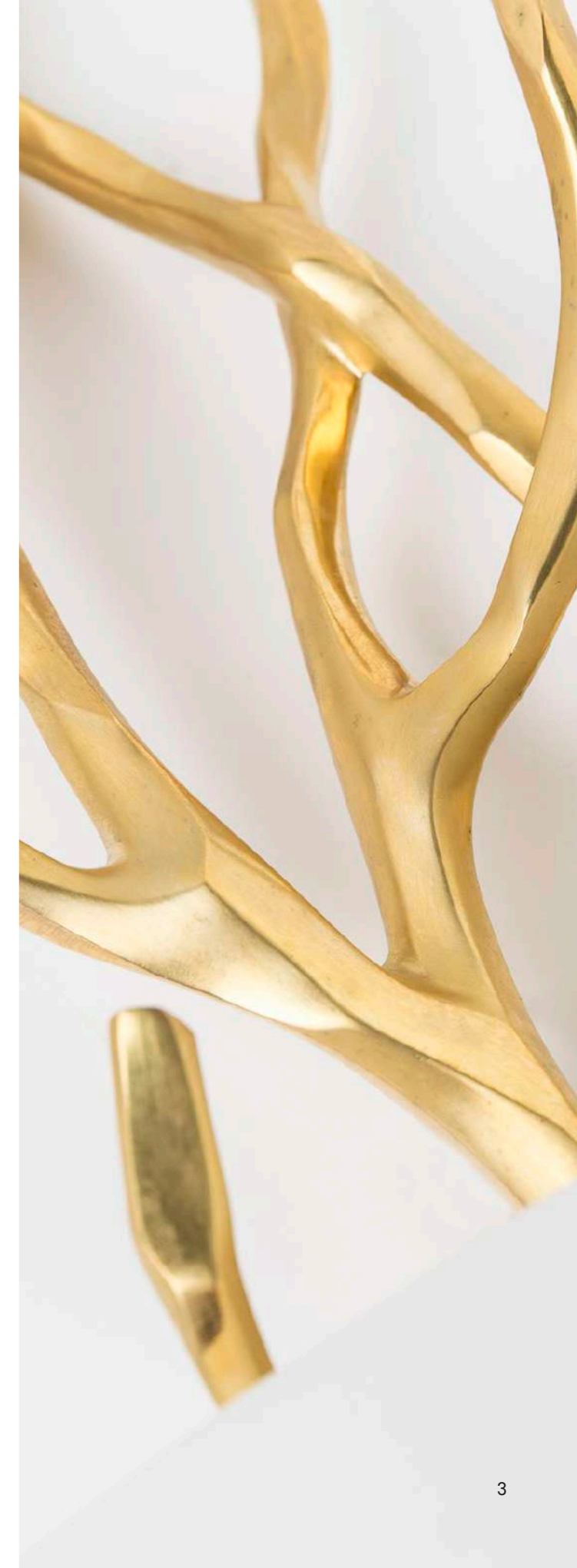
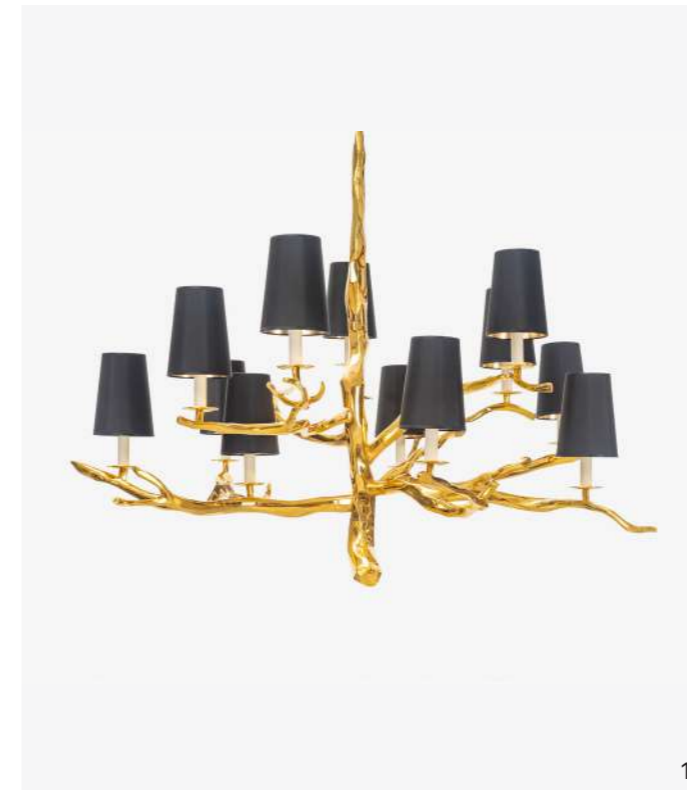


# DELISLE

## STRUCTURE



Structure is the result of the meeting of Jean Delisle, passionate about travel and contemporary architecture, with the family business he joined in 2009. The work of bronze, a craft carried by Delisle, allows to present an architectural and structured nature. Polished alabaster, straw marquetry and indirect LED lighting complete each of the creations in the collection. The finishes on bronze are multiple: from polished gilding to fire patina and the application of white and yellow gold leaf.



- 1- Chandelier - 13922
- 2- Chandelier - 13874
- 3- Wall sconce - 13687





Design by Pierre Yovanovitch





13896



















13932



12804



13364

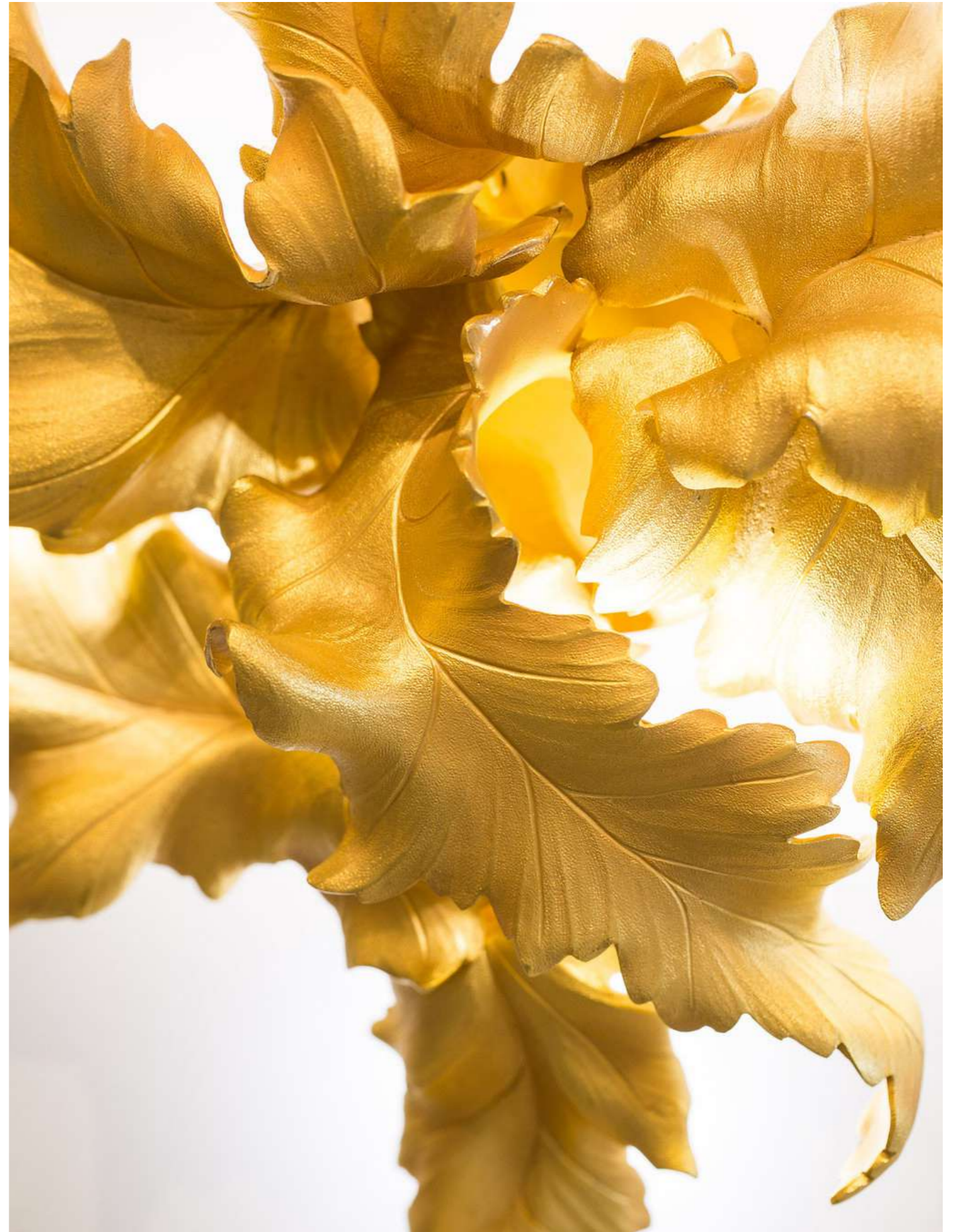




12869B



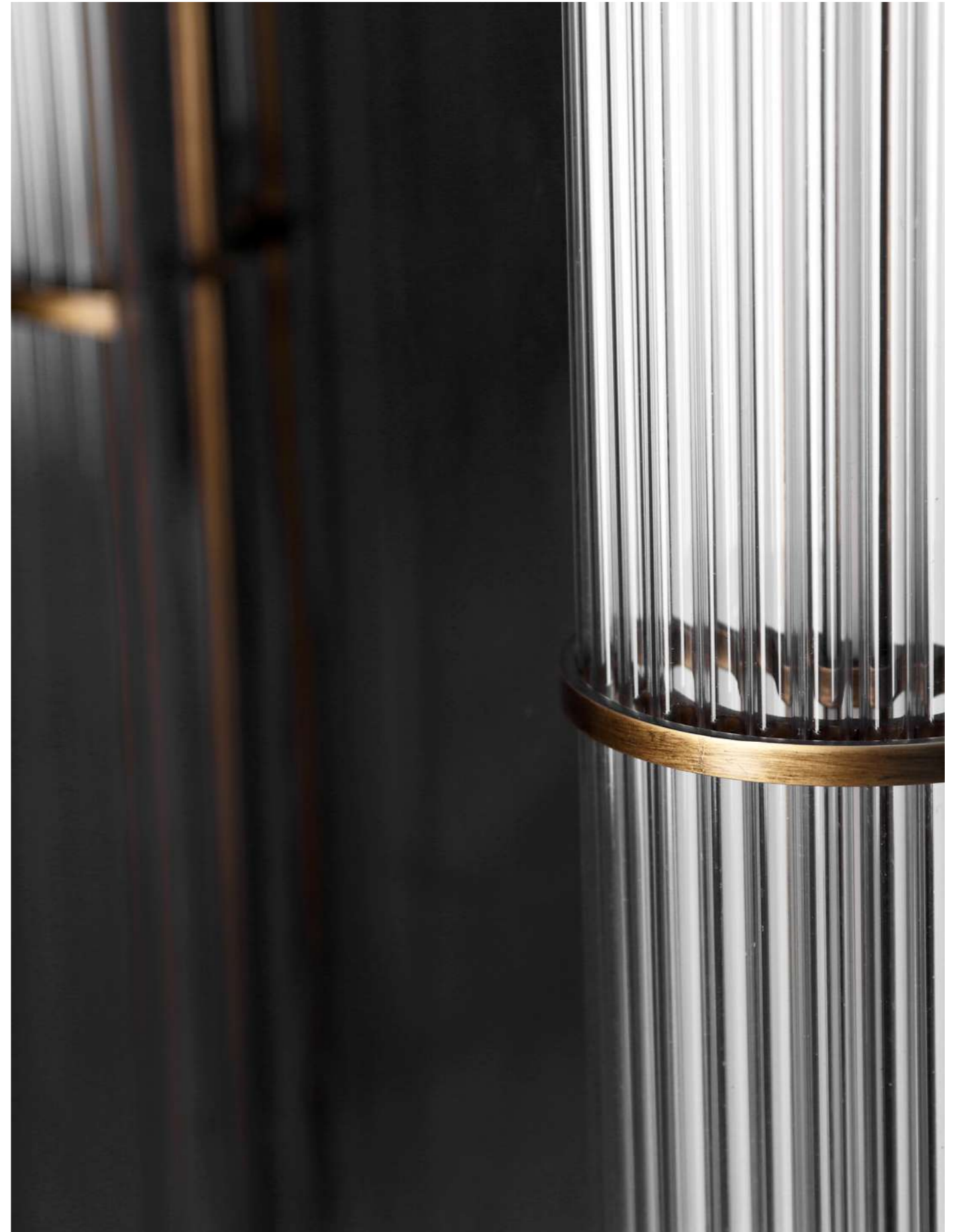
13915







Holocène  
13928







13592



Pierre Yovanovitch  
13925





13505A



13912



13910





13548







13085A



13085A



13917





13856



13897



13389B



13842







13565B



13615















# PROJECTS







Musée de la Chasse et de la Nature, Paris, 2013



Four Seasons Georges V, Paris, 2009  
Interior Design by: Pierre-Yves Rochon





Private project, California, 2018  
Interior Design by: Aude Gros-Rosanvallon, Holocène Design

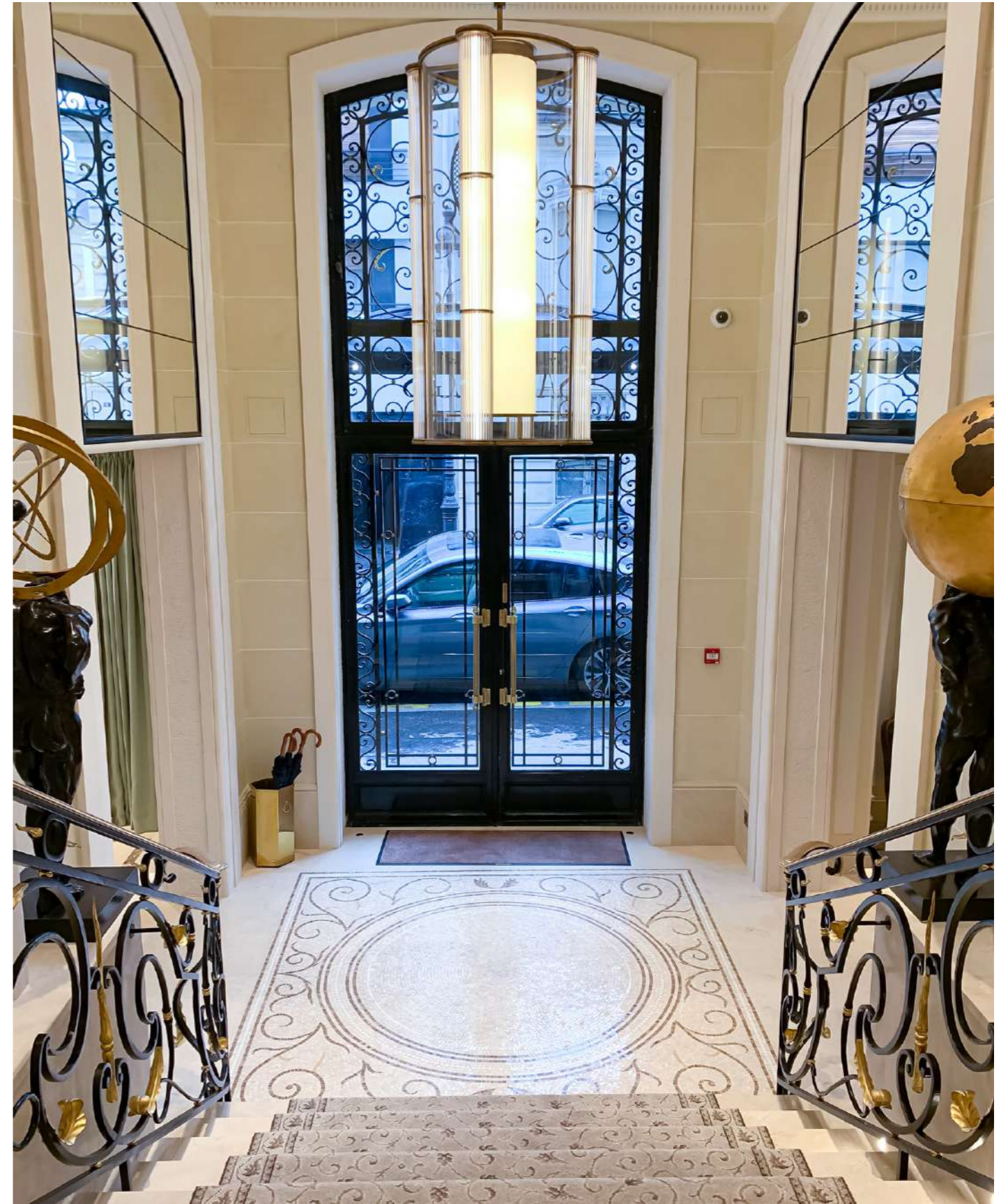


Private project, California, 2018  
Interior Design by: Aude Gros-Rosanvallon, Holocène Design



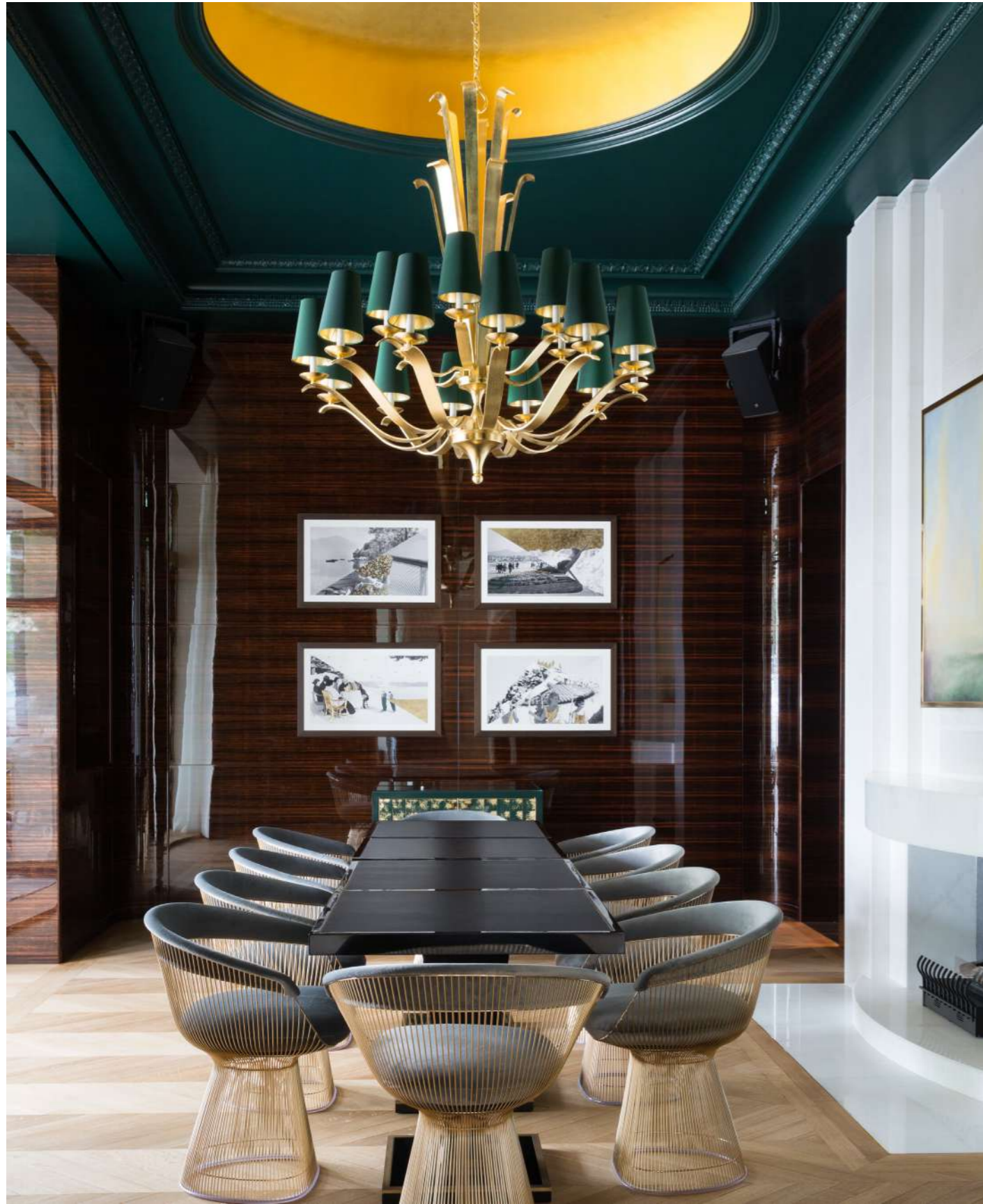


Baur au Lac Hotel, Zurich, 2015  
Interior Design by: Pierre-Yves Rochon

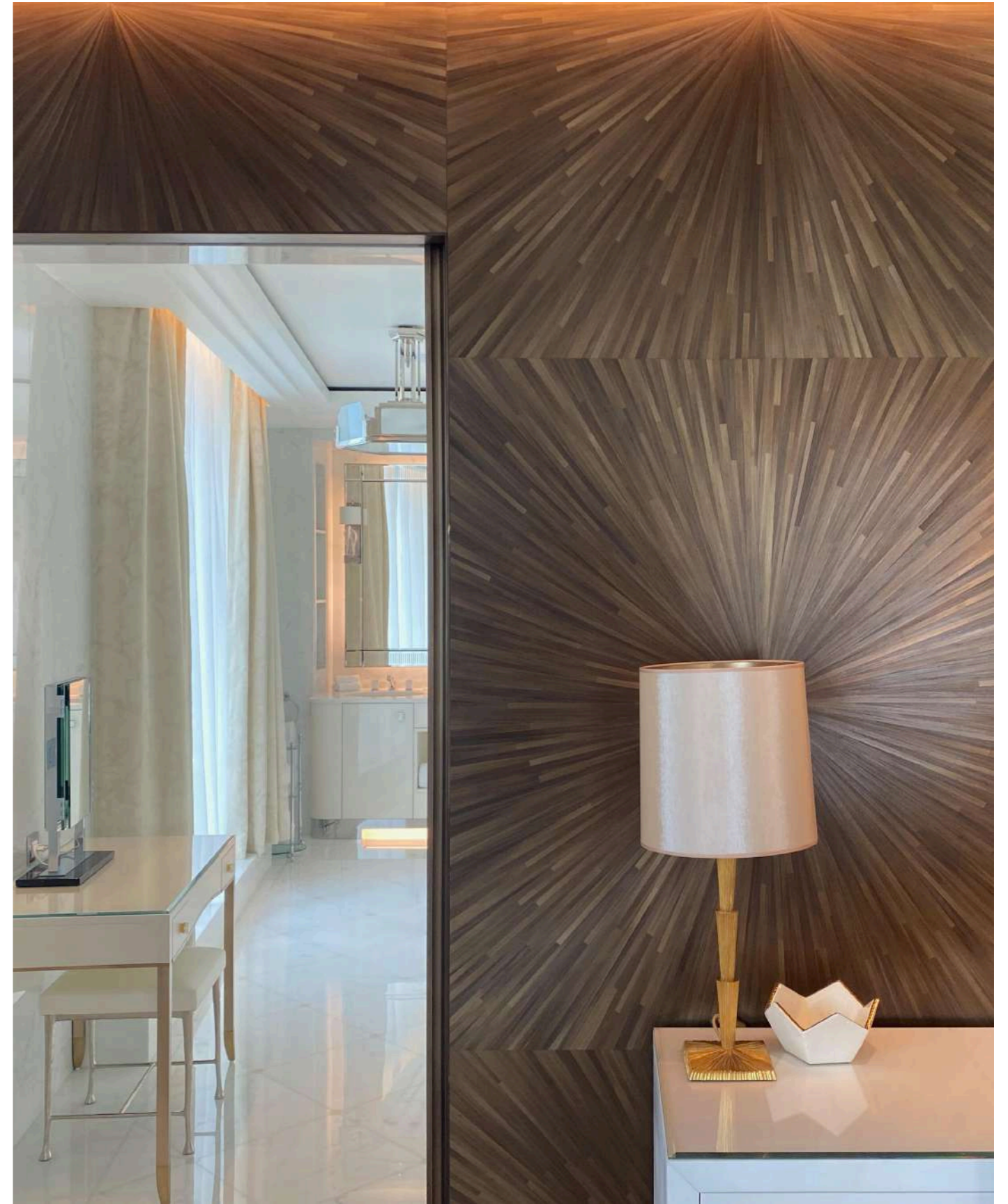


San Regis, Paris, 2021  
Interior Design by: Aude Gros-Rosanvallon, Holocène Design





The Woodward Hotel, Geneva, 2021  
Interior Design by: Pierre-Yves Rochon

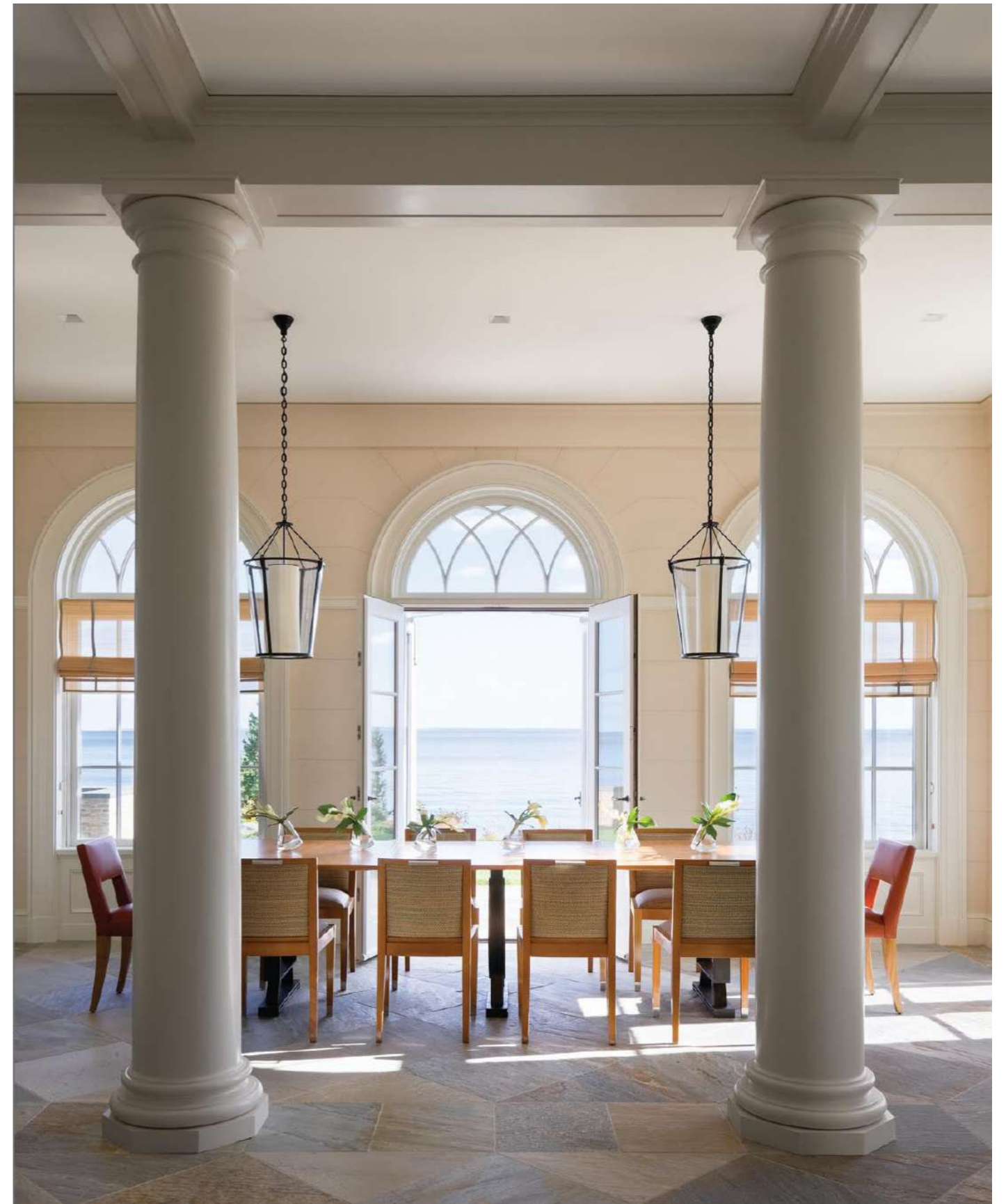


The Woodward Hôtel, Genève, 2021  
Interior Design by: Pierre-Yves Rochon





Boutique Cartier, Paris, 2022  
Interior Design by: Studio Parisien

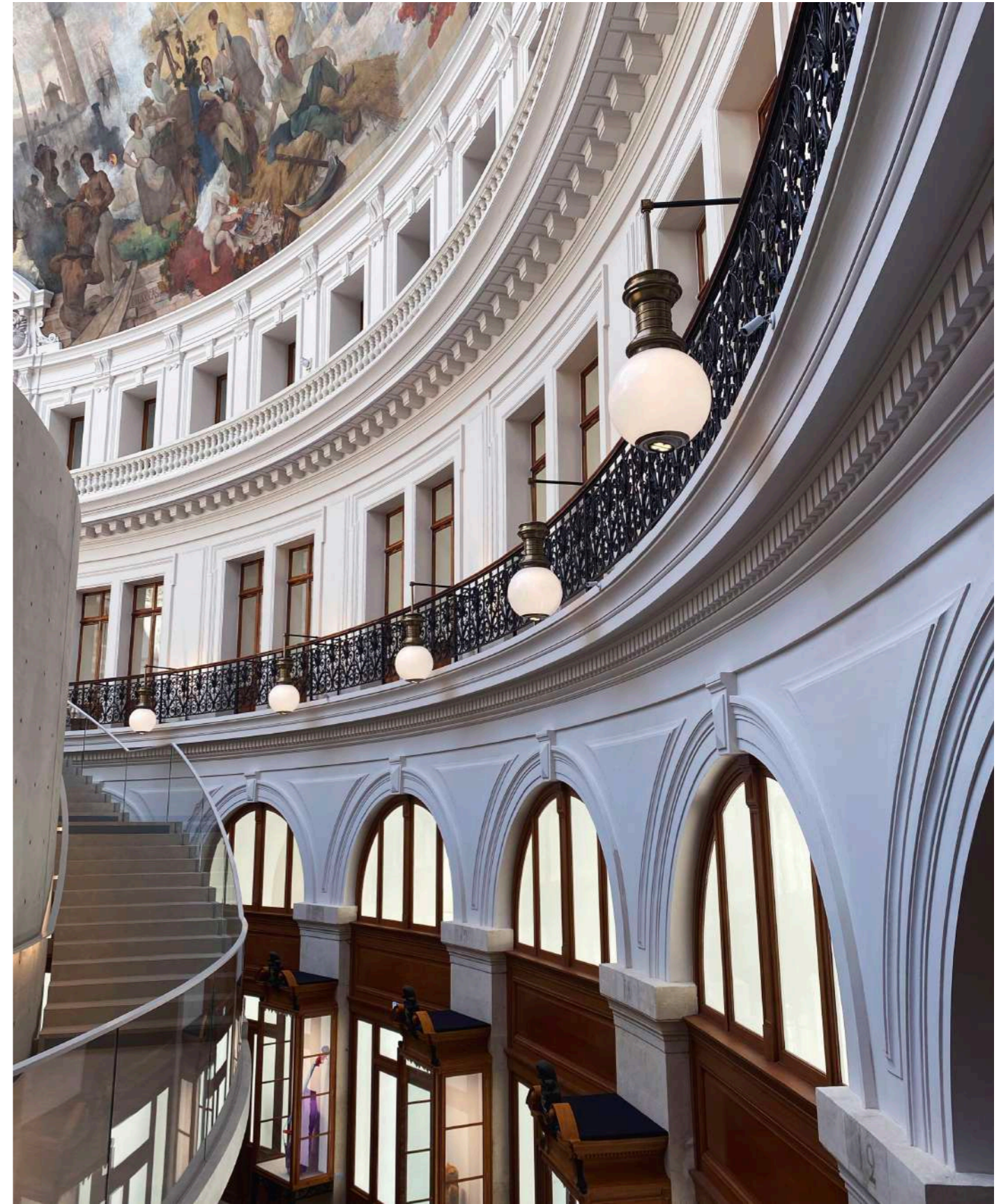


Westport, Connecticut residence, 2015  
Interior Design by: Barbara Lane



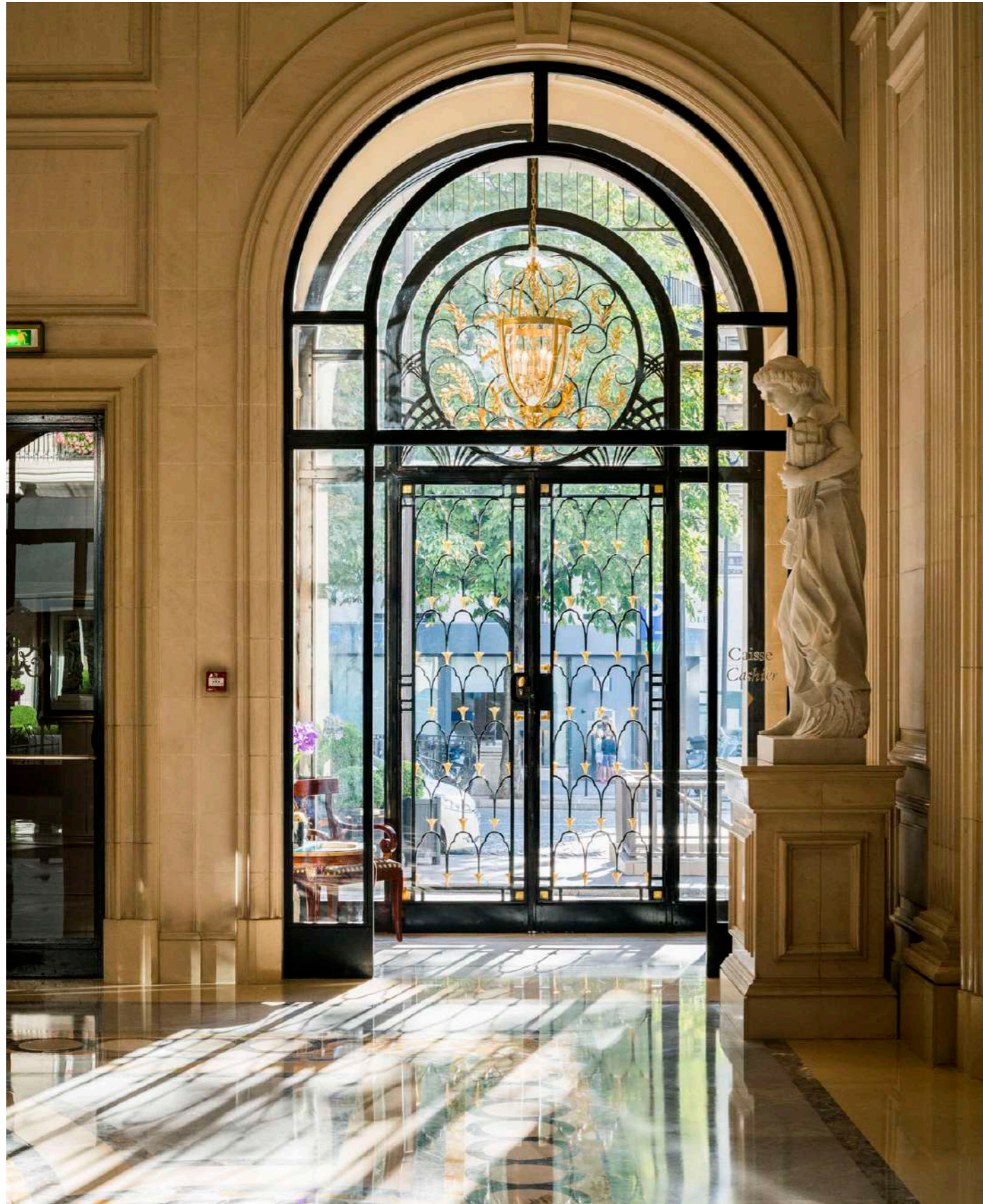


Ritz Hotel, Paris, 2015  
Interior Design by: The Office of Thierry Despont



Bourse de Commerce - Pinault Collection, Paris, 2021  
Interior Design by: Tadao Ando





Four Seasons Georges V, Paris, 2009  
Interior Design by: Pierre-Yves Rochon



Penthouse apartment, Barcelona, 2020  
Interior Design by: That Home Studio





Villa Noailles, Hyères, 2022  
Interior Design by: François Champsaur

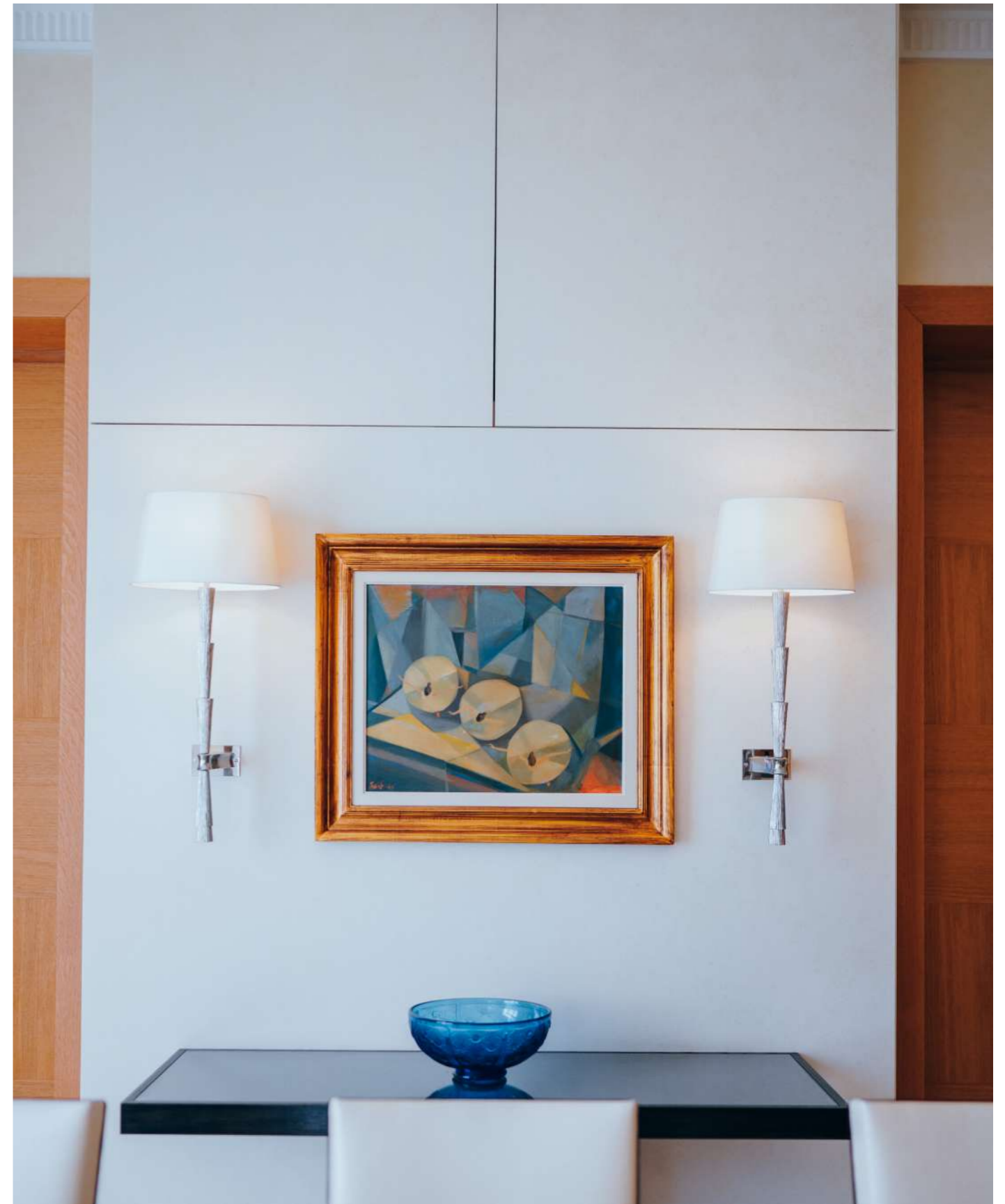


Espace Richaud, Versailles, 2018  
Interior Design by: Jean-Michel Wilmotte





Kneedler Fauchère Showroom, Denver, 2022  
Interior Design by: Kneedler Fauchère



Private project, Paris, 2018  
Interior Design by: Nicolas Aubagnac



# CONTACT

HÔTEL DE CANILLAC  
4 RUE DU PARC ROYAL  
75003, PARIS

TEL: +33 (0) 1 42 72 21 34  
INFO@DELISLE.FR  
WWW.DELISLE.FR

Our showroom is open from Monday to Friday from  
09:00 to 12:30 and from 14:00 to 18:00.  
Please make an appointment by phone or email.



Feel free to register on our website to access the  
Delisle professional catalog.



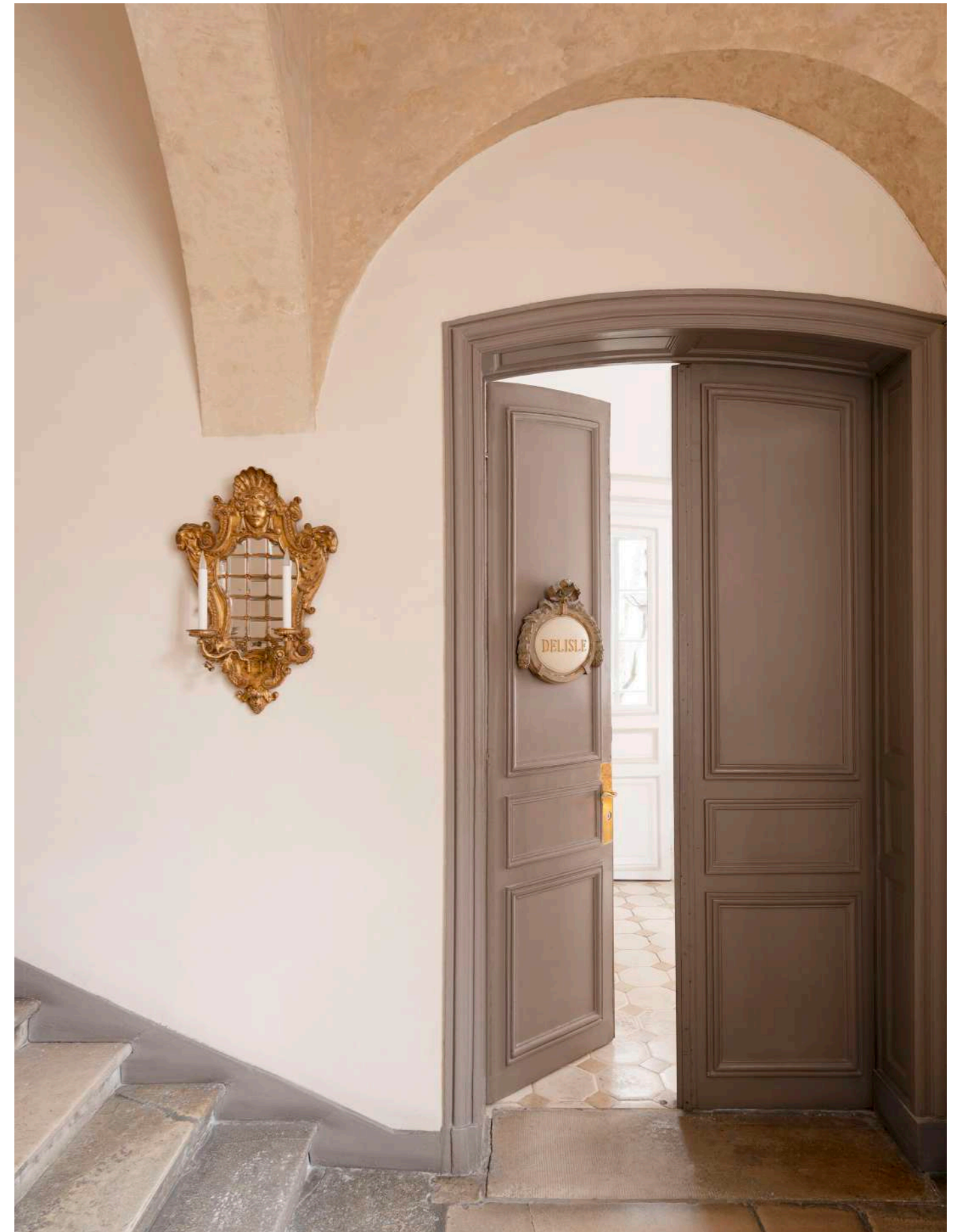
Delisle Paris



delisleparis



Delisle











**DELISLE**

4, RUE DU PARC-ROYAL – 75003 PARIS

T: +33 1 42 72 21 34 - [INFO@DELISLE.FR](mailto:INFO@DELISLE.FR) - [WWW.DELISLE.FR](http://WWW.DELISLE.FR)

Première de couverture: design by Eric Schmitt. Quatrième de couverture: design by Sami Sader.